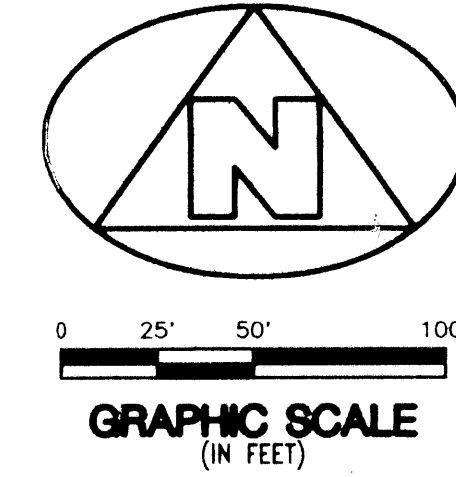


SARATOGA AT ROYAL PALM PLAT IV

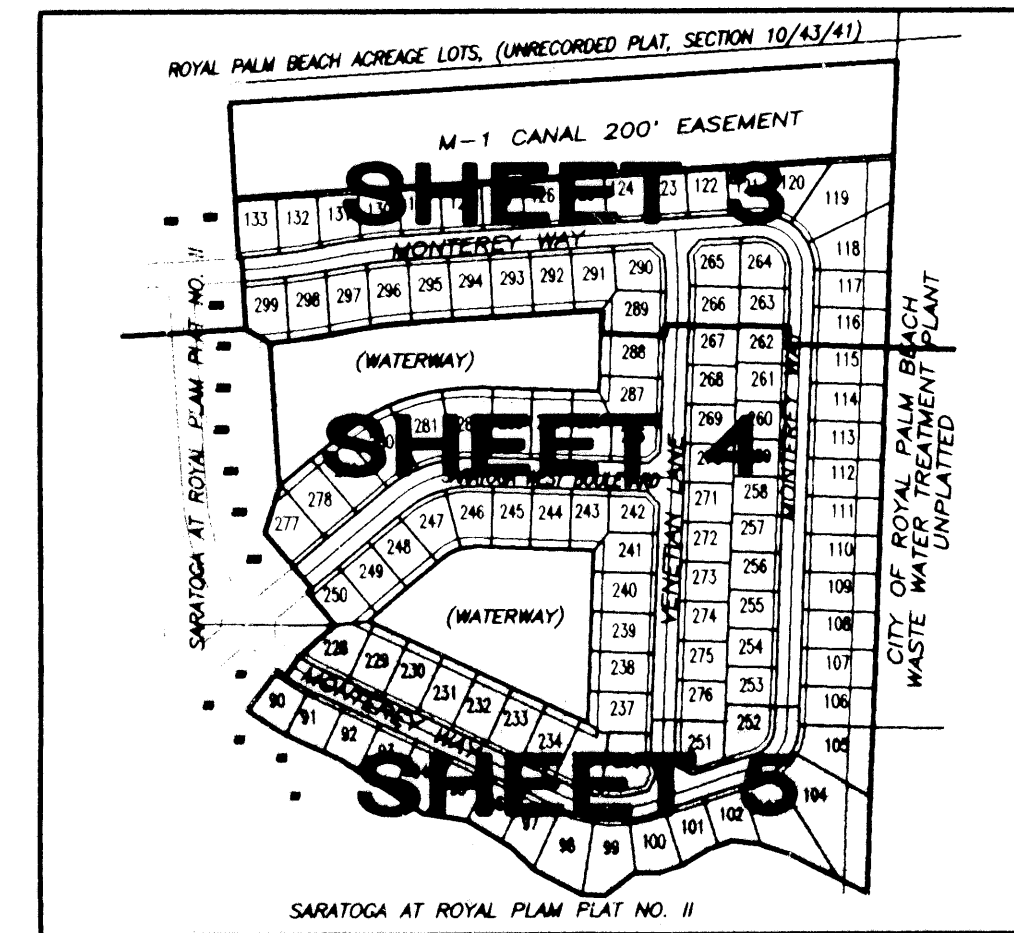
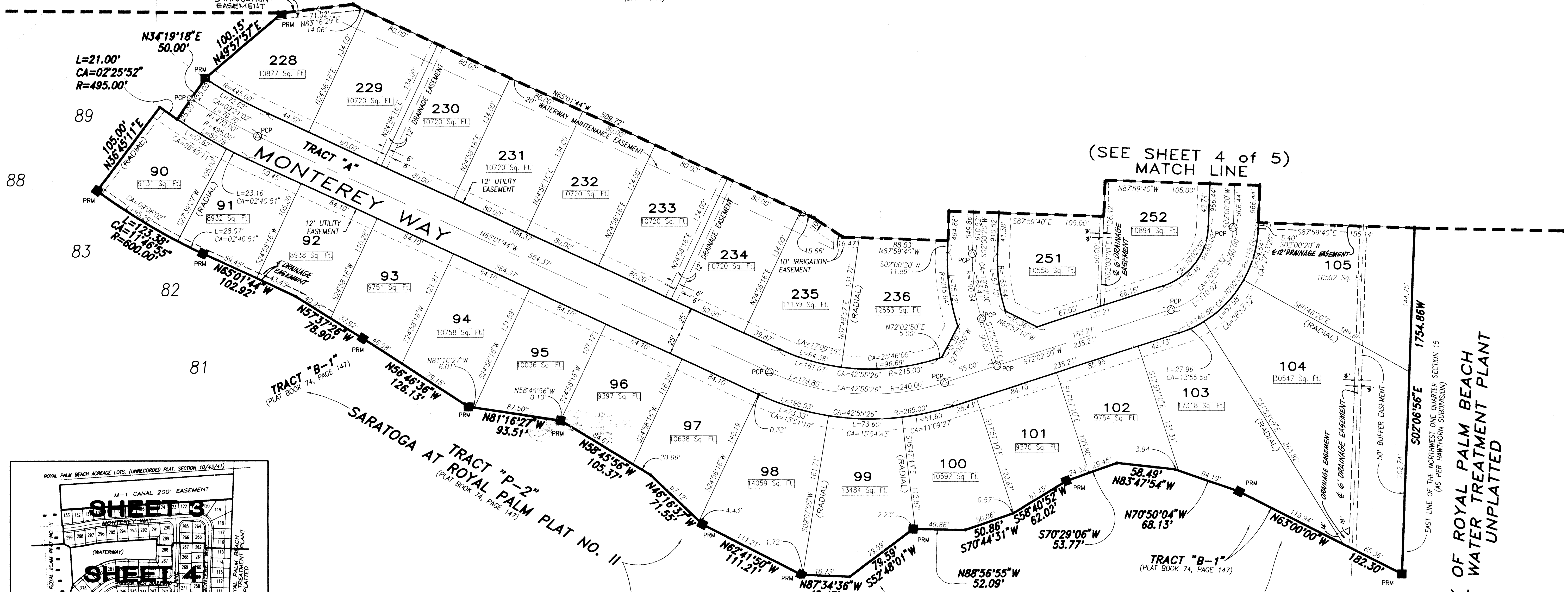
(A PART OF ROYAL PALM HOMES P.U.D.)
LYING AND BEING IN SECTION 15, TOWNSHIP 43 SOUTH, RANGE 41 EAST, VILLAGE OF ROYAL PALM BEACH, PALM BEACH COUNTY, FLORIDA,
BEING A RE-PLAT OF A PORTION OF HAWTHORNE SUBDIVISION, AS RECORDED IN PLAT BOOK 30, PAGE 104, PUBLIC RECORDS, PALM BEACH COUNTY, FLORIDA



TRACT "W-2"
(WATERWAY)
(2.48 Acres)

(SEE SHEET 4 of 5)
MATCH LINE

(SEE SHEET 4 of 5)
MATCH LINE



- SURVEYOR'S NOTES AND LEGEND:
1. BEARINGS SHOWN OR STATED HEREON, ARE BASED ON, OR ARE RELATIVE TO AN ASSUMED BEARING OF NORTH 02°06'56" EAST, ALONG THE EAST LINE OF THE N.W. 1/4, SECTION 15, (AS PER HAWTHORN SUBDIVISION)
 2. IN THOSE INSTANCES WHERE UTILITY/DRAINAGE STRUCTURES ARE CONSTRUCTED IN CONFLICT WITH THE PLATTED PERMANENT CONTROL POINTS (P.C.P.) POSITION, STRADDLERS MONUMENTED AS PERMANENT CONTROL POINTS WILL BE SET TO REFERENCE THE PLATTED P.C.P. POSITION.
 3. LINES INTERSECTING CURVES ARE NON RADIAL UNLESS OTHERWISE NOTED.
 4. SQ. FT. DENOTES SQUARE FEET
 5. C/L DENOTES A CENTERLINE
 6. W.M.E. DENOTES WATERWAY MAINTENANCE EASEMENT
 7. DENOTES A FOUND #2424 PERMANENT REFERENCE MONUMENT (P.R.M.)
 8. DENOTES A FOUND #2424 PERMANENT CONTROL POINT (P.C.P.)
 9. DENOTES A SET #2424 PERMANENT REFERENCE MONUMENT (P.R.M.)
 10. DENOTES A SET #2424 PERMANENT CONTROL POINT (P.C.P.)

CITY OF ROYAL PALM BEACH
WASTE WATER TREATMENT PLANT
UNPLATTED

THIS INSTRUMENT WAS PREPARED BY WM. R. VAN CAMPEN, R.L.S., IN AND FOR THE OFFICES OF BENCH MARK LAND SURVEYING & MAPPING, INC., 4152 WEST BLUE HERON BOULEVARD, SUITE 121, RIVIERA BEACH, FLORIDA

BENCH MARK
Land Surveying and Mapping, Inc.
4152 West Blue Heron Blvd., Suite 121, Riviera Beach, FL 33404
Fax (407) 844-9659 Phone (407) 848-2102

RECORD PLAT		SARATOGA AT ROYAL PALM PLAT IV	
DWN	DWM	FB	DATE 06/01/96
CKD	FILE P15-W-4.dwg	SCALE 1" = 50'	SHEET 5 OF 5

SUBDIVISION # SARATOGA AT ROYAL PALM PLAT IV
 BOOK 79 PAGE 120
 FLOOD ZONE FLOOD MAP #
 QUAD # ZONING
 SE ZIP CODE
 PUD NAME VILLAGE AT ROYAL PALM BEACH